

actis



OPERATIONSLEUCHTENSYSTEM
OPERATION LIGHTS SYSTEM

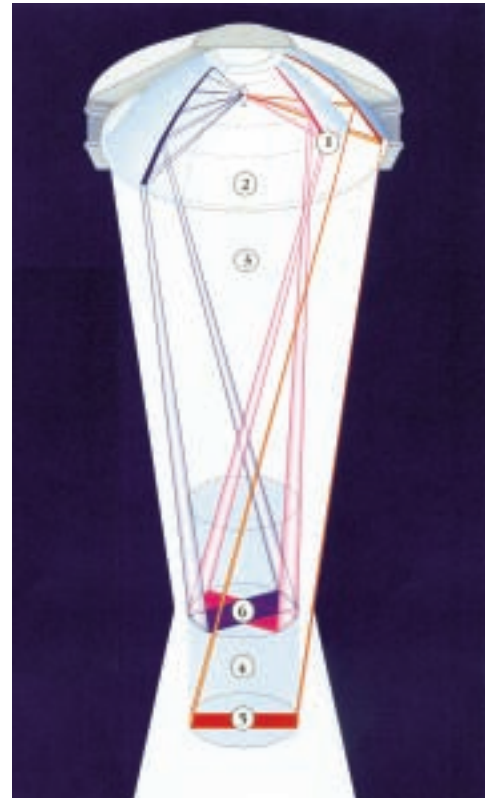




actis 70 actis 50 actis 30



Homogeneous lightfield

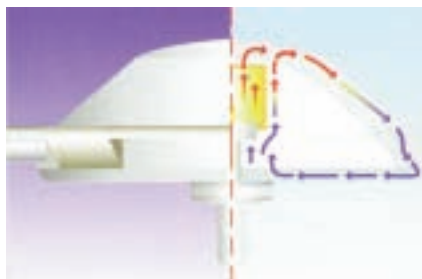


The reflector system

- ① Reflector segments
- ② Circular Polyelipsoid reflector system
- ③ Light emission over a large area
- ④ Light cylinder of constant intensity
- ⑤ Illumination of a single segment
- ⑥ Illuminated surgical site

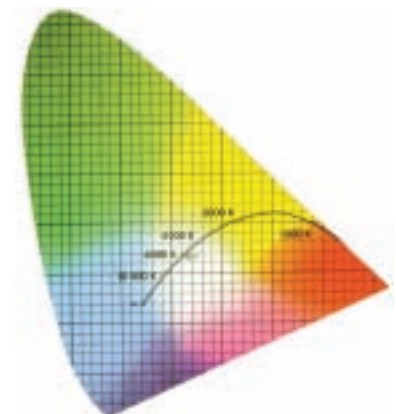


Automatic switching to a reserve light source prevents any loss of light in the case of bulb failure.



Warm-cold air circulation cooling

Heat is dissipated uniformly over the entire upper part of the light through an internal convection circuit.



Operating room-typical light of 4.500 Kelvin can be equated with the “day-light white” type of color.

Control elements

Wall



Operating light



Nice designed
integrated rail for a
easy maneuverability
of the **actis**

Handgrip
sterilizable



Bulb change

For security reason, we propose the
bulb change including the base.

Camera system



Position of Camera

Image sensor	1/6 type Super HAD CCD
Number of effective pixels	Approx. 800.000 pixel
Video signal format	PAL
Lens	25 x Zoom f=24 mm (wide) to 60 mm (tele) F 1,6 to F 2,7
Digital zoom	12 x (300 x with optical zoom)
Minimum working distance	35 mm (wide end), 800 mm (tele end)
Sync. System	Internal/External (V-Lock)
Minimum illumination	3.0 lx (Typical) (50 IRE)
S/N ratio	49 dB
Electronic shutter	1/1 to 1/10.000 s , 22 steps
White Balance (WB)	Auto, ATW; Indoor, Outdoor, One-Push, Manual
Gain	Auto/Manual (-3 to 28 dB, 16x 2 dB steps)
AE Control	Auto, Manual, Priority mode, Bright, EV compensation; Back-light compensation
EV compensation	-10,5 to +10,5 dB (1,5 dB steps)
Back light compensation	On/Off
Privacy Zone Masking	On/Off
Flicker cancel	---
Focusing System	Auto (Sensitivity: High, Low) One Push AF Manual, Infinity Interval AF, Zoom Trigger AF
Picture effect	Neg, Art, Black & Whight, Mirror Image
Camera operation switch	Zoom tele, Zoom wide
Video output	VBS 1.0 Vp-p (Sync. Negative) Y/C output
Camera control interface	VISCA (TTL signal level) Baud Rate 9,6 Kb/s 38,4 Kb/s Stop bit 1/2 selectable
Storage temperature	- 20° C to 60° C (-4° F to 140° F)
Operating temperature	0° C to 50° C (32° F to 122° F)
Power consumption	6 to 12 V DC/1,5 W (inactive motores), 2,7 W (active motors)
Mass	Approx. 230 g (8,1 oz)
Dimensions (W x H x D)	50 x 57,5 x 81,8 mm / 2 x 2 3/8 x 3 1/4 inches)

Table of Performance



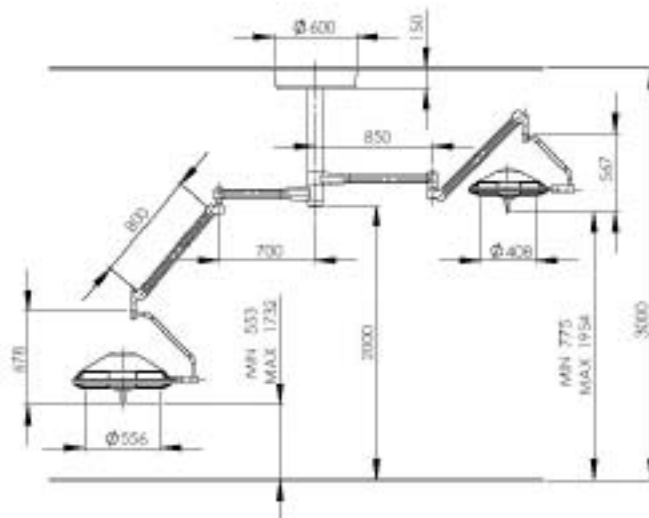
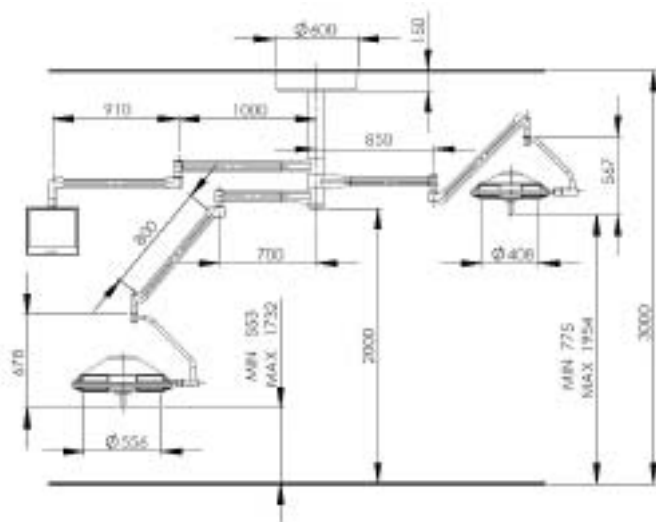
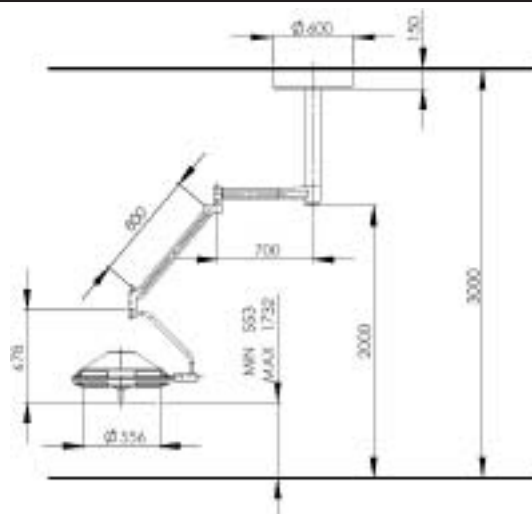
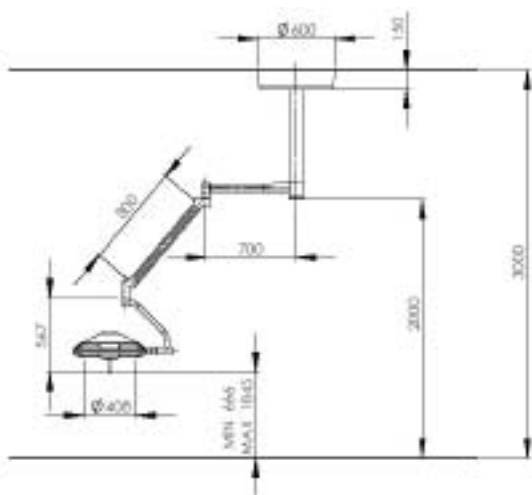
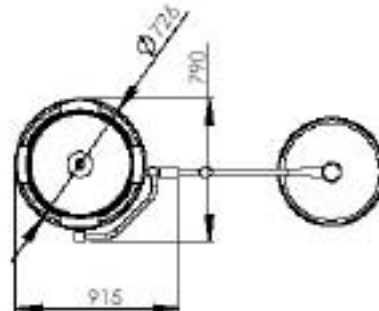
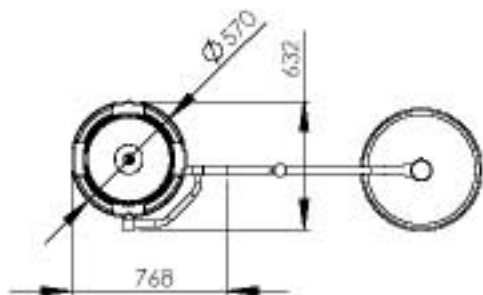
actis Lighting Data	30	50	70
Illuminance at a defined distance, electrically dimmable from/to [%]	---	---	55 - 100
Illuminance at a defined distance (per light field adjustment [lx])	35.000	50.000 - 100.000	50.000 - 140.000
Focusable size of light field d10 at a distance of 1 m [mm]	180	140 - 200	160 - 260
Focusable size of light field d50 at a distance of 1 m [mm]	---	80 - 130	83 - 165
Color temperature [K]	4.000	4.300	4.300
Color rendering index [Ra(1-8)]	90	93	93
Red rendering index [R9]	---	ca. 70	ca. 70
Total irradiance (at 100,000 lx) [W/m ²]	---	350	355
Heat radiation > 700 nm (at 100,000 lx) [W/m ²]	---	25	33
Infrared heat radiation > 780 nm (at 100,000 lx) [W/m ²]	---	5	5
Luminosity factor of radiation [lm/W]	---	285	282

actis Electrical Data	30	50	70
Supply voltage [V]	115/230	24/115/230	24/115/230
Nominal lamp wattage [W]	50	120	150
Nominal lamp voltage [V]	12	24	24
Protection Class (in acc. with MDD)	I	I	I

actis General Data	30	50	70
Diameter of light housing (mm)	320	560	720
Diameter of reflector (mm)	260	410	570
Certificate	93/42 EWG	93/42 EWG	93/42 EWG

Data sheet actis 50

Data sheet actis 70



Ceatec Medizintechnik GmbH & Co. KG
Eisenbahnstraße 84
D - 78573 Wurmlingen



web: www.ceatec.de
e-mail: info@ceatec.de

Phone: +49-7461-9348-0
Fax: +49-7461-9348-19